



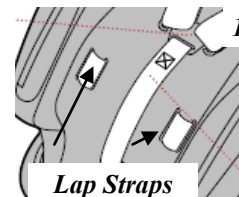
CHICCO

KEYFIT 30
KEYFIT 30 MAGIC
 (See also KeyFit 22)

- Type:** Rear-facing-only
- Last date made:** Current
- First made:** 2007
- Weight limits:** 4 to 30 lbs.
- Harness:** 5-point harness

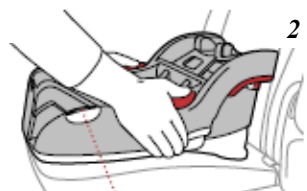


Harness: Shoulder straps are attached to a splitter plate behind seat. Press button at lower front of seat and pull on shoulder straps to loosen. Pull strap end in front of seat to tighten harness. Lap and shoulder straps form one continuous loop. Lap straps are threaded through slots near child's hips to underside of seat (diagram 1).

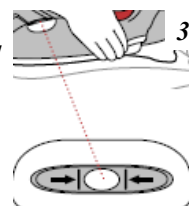


Harness slots: There are three sets of slots. To change shoulder strap slot height, remove straps from splitter plate on back and rethread through desired slots, then re-attach to splitter plate.

Crotch strap: Not adjustable. Crotch strap is sewn to a metal anchor which must lie flat against underside of seat. Chicco does not permit the use of crotch rolls.

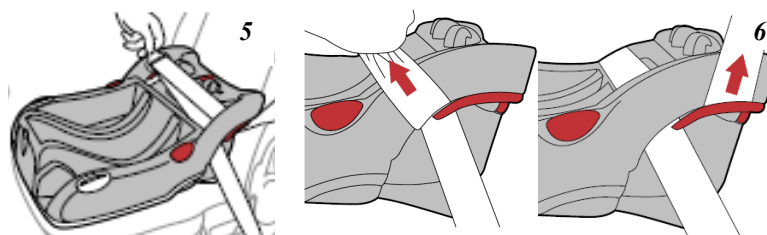
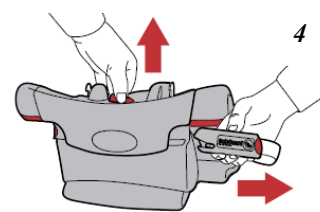


Angle adjustment: Push buttons while lifting base (diagram 2). Angle is correct when entire bubble is between arrows (diagram 3). Chicco does not allow the use of noodles or towels to assist with recline adjustment when base is being used.



Belt path: If LATCH is not in use, store connectors in storage pockets at front of base (diagram 4).

With base: Route belt through openings in base and buckle (diagram 5). Tighten belt while pushing base firmly into vehicle seat. Route shoulder belt through shoulder belt lock-off on opposite side of vehicle belt buckle (diagram 6). If using lap-only belt, do not use lock-off. Make sure lap belt is locked and that free end of the belt is stored so it does not interfere with attachment of carrier to base. Do not pull on shoulder belt after it is in lock-off, as this could damage the lock-off.



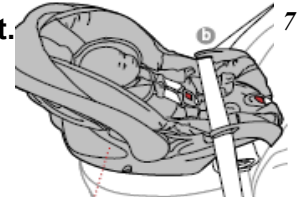
SEE PAGE 2

Belt path: (cont.)

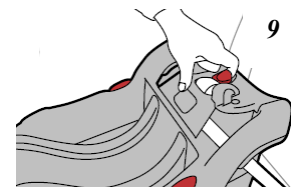
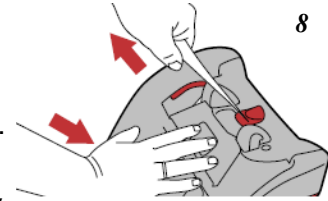
With base (cont.): Do not install using inflatable safety belt.

This statement is retroactive.

Without base: The vehicle belt is routed through slots across top of seat, over child (diagram 7). The shoulder portion of the belt, if present, should be left out of the slots and allowed to rest against vehicle seat.

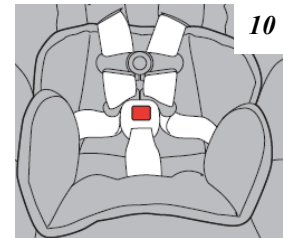


LATCH: LATCH may be used only when installing this restraint with the base. Remove the LATCH connectors by pulling out of storage compartments while lifting up on LATCH release lever (diagram 4, p.1). Snap the connectors onto the anchors. You should hear a positive 'click' to confirm that the connector is secured. To tighten, pull up firmly on LATCH pull strap while pressing base firmly into vehicle seat (diagram 8). To uninstall base, loosen LATCH by lifting the LATCH Release Lever (diagram 9) and pull base away from vehicle seat. Manufacturer states that lower LATCH bars may be used in any seating position designated as a LATCH location in vehicle owner's manual.



Handle: All locked handle positions may be used in the vehicle.

Other: Use infant insert (diagram 10) only for a child between 4 - 11 lbs., and only when harness is in lowest set of slots. Top of insert must be below lowest set of slots. Head support may be used with or without infant insert. Use slots above harness to connect head support fastener tabs.



Chicco does not allow the use of crotch rolls.

To release the seat from the base, pull on the release handle located at the top of seat shell. Be sure the handle is locked into the upright, carry position before removing seat from base.

The instruction manual is stored in a compartment at the rear of the base.

Base is not certified for aircraft use.